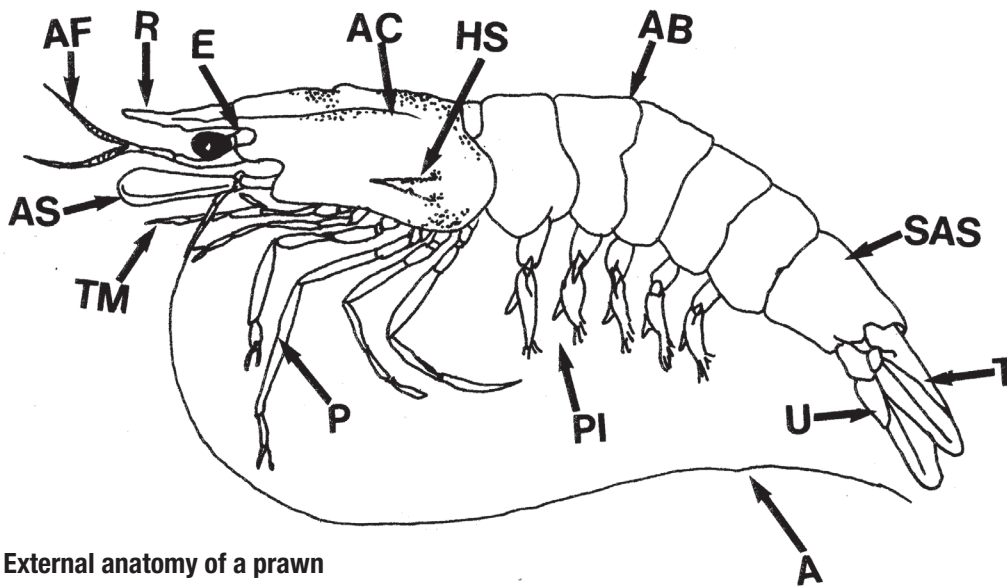


# Anatomy—Crustacean

## Prawn

The common names 'prawn' and 'shrimp' are often used synonymously for the same crustaceans in different parts of the world. This field guide uses the terms according to where the species originates or is cultivated.



### External anatomy of a prawn

**A** = antenna. **AB** = abdominal segment. **AC** = adrostral carina. **AF** = antennular flagellum. **AS** = antennal scale. **E** = eyestalk. **HS** = hepatic spine. **P** = pereopods. **PI** = pleopods. **R** = rostrum. **SAS** = sixth abdominal segment. **T** = telson. **TM** = third maxilliped. **U** = uropod

Source: Illustration © State of Queensland, Department of Primary Industries and Fisheries, 2007 (illustrator: R Bowater)

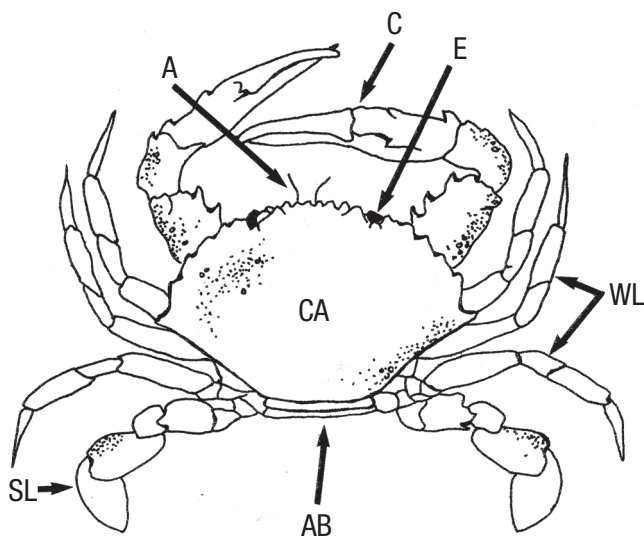


**Black tiger prawn (*Penaeus monodon*)**

Source: I East



## Anatomy—Crustacean continued

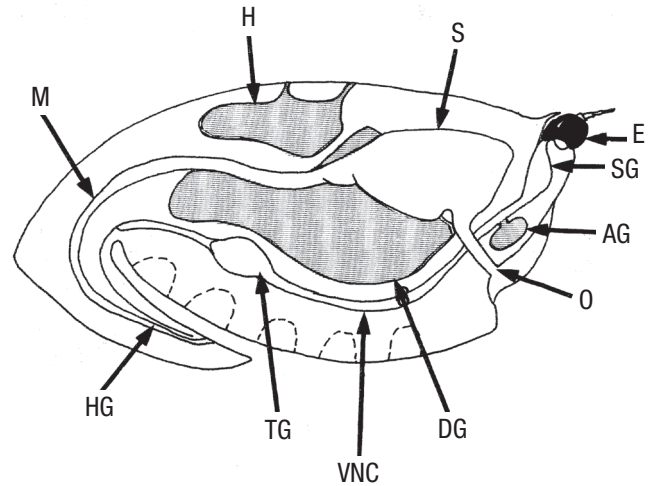


### Crab

#### External anatomy of a crab

**A = antenna. AB = abdomen (underneath).  
C = claw. CA = carapace. E = eye. SL = swimming leg.  
WL = walking leg**

Source: Illustration © State of Queensland, Department of Primary Industries and Fisheries, 2007 (illustrator: R Bowater)



**Internal anatomy of a crab (cut down the centre and looking side on). AG = antennal gland. DG = digestive gland. E = eye. H = heart. HG = hindgut. M = midgut. O = oesophagus. S = stomach. SG = supraoesophageal ganglion. TG = thoracic ganglion. VNC = ventral nerve cord**

Source: Illustration © State of Queensland, Department of Primary Industries and Fisheries, 2007 (illustrator: R Bowater)



**Blue swimmer crab (*Callinectes sapidus*) with carapace removed, revealing internal structure**

Source: O Zmora



Australian Government  
Department of Agriculture,  
Fisheries and Forestry

Sourced from AGDAFF–NACA (2007) *Aquatic Animal Diseases Significant to Asia-Pacific: Identification Field Guide*. Australian Government Department of Agriculture, Fisheries and Forestry, Canberra.

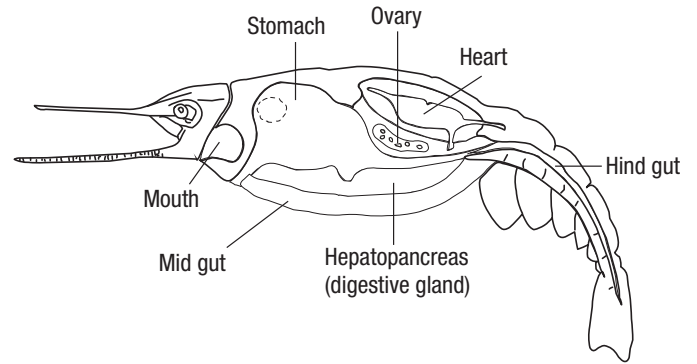
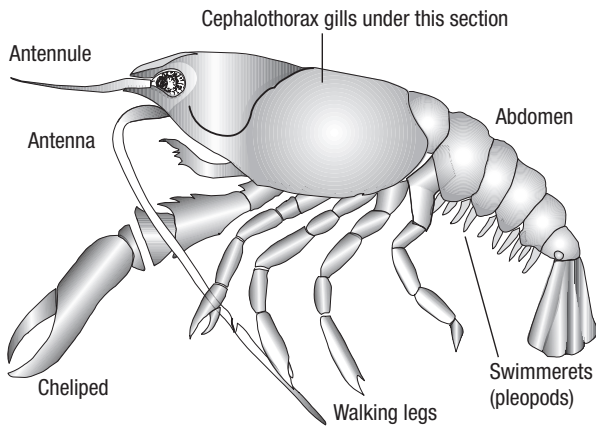
© Commonwealth of Australia 2007

This work is copyright. It may be reproduced in whole or in part subject to the inclusion of an acknowledgment of the source and no commercial usage or sale.



## Anatomy—Crustacean continued

### Crayfish



#### External anatomy of a freshwater crayfish

Source: Aquatic Animal Health, Product Integrity, Animal and Plant Health, AGDAFF

#### Internal organs in section

Source: Aquatic Animal Health, Product Integrity, Animal and Plant Health, AGDAFF



#### Redclaw crayfish (*Cherax quadricarinatus*)

Source: C Jones



#### Redclaw crayfish with section of carapace removed, revealing location of the gills

Source: C Jones



Australian Government  
Department of Agriculture,  
Fisheries and Forestry

Sourced from AGDAFF–NACA (2007) *Aquatic Animal Diseases Significant to Asia-Pacific: Identification Field Guide*. Australian Government Department of Agriculture, Fisheries and Forestry, Canberra.

© Commonwealth of Australia 2007

This work is copyright. It may be reproduced in whole or in part subject to the inclusion of an acknowledgment of the source and no commercial usage or sale.

